

Export

From: [Benjamin Krebs](#)
To: joseph.spadone@NSCorp.com
Subject: Railroad drainage and erosion in south Lexington area

Sent: Wed, 03 Feb 2016 15:56:49 GMT

Attachments may contain viruses that are harmful to your computer. Attachments may not display correctly.

 [Derby Dr Exhibit.pdf \(2883Kb\)](#)

Mr. Spadone,

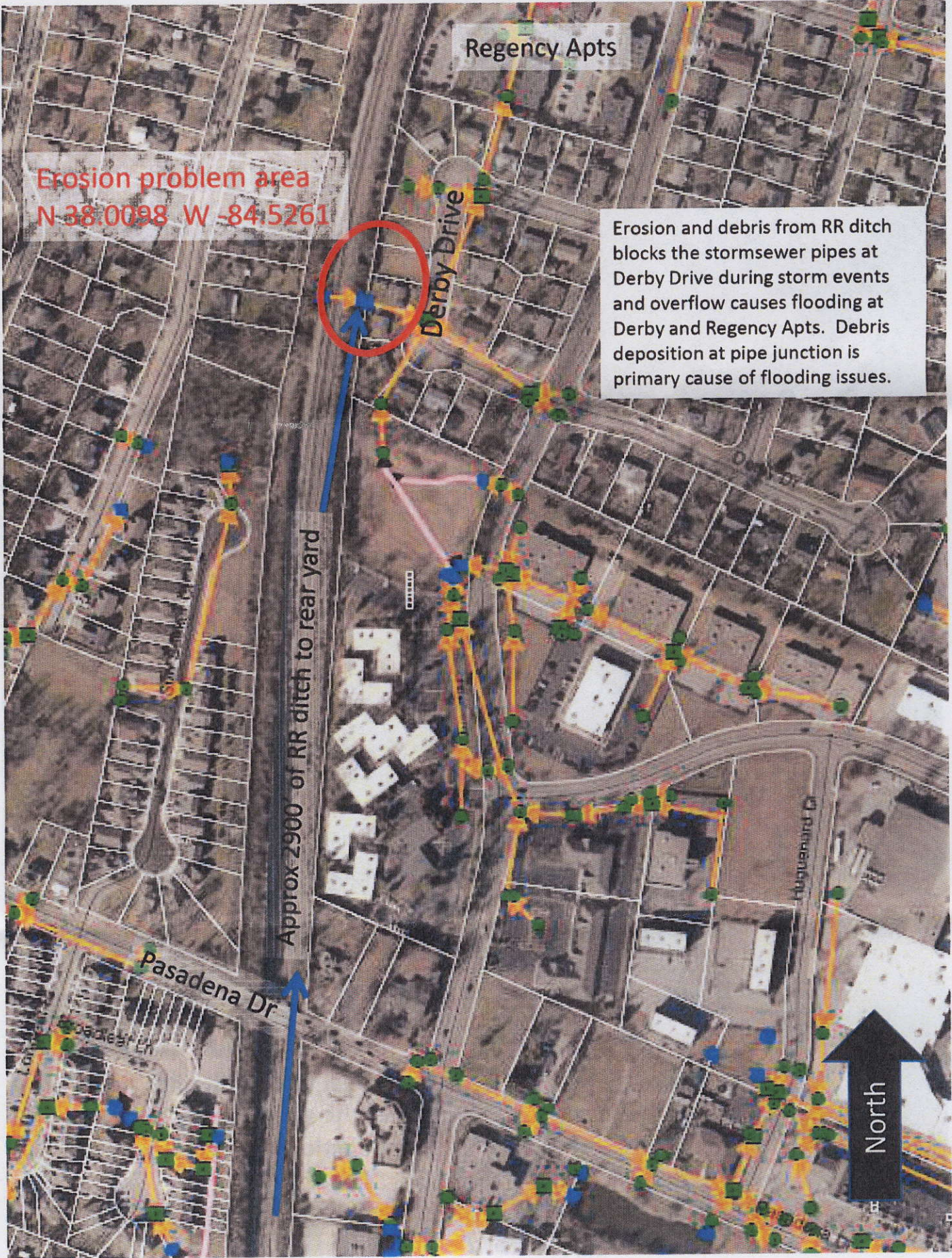
Thank you for talking with me last week regarding some reoccurring drainage issues near the railroad and Derby Drive properties in Lexington. This is follow-up to our conversation and your request for additional information and possible recommendations. See attached picture summary of the issues. Please take a look and let me know if you would like to meet onsite to discuss further.

Thank you,

Ben

Benjamin Krebs, P.E., CFM
Municipal Engineer Sr.
Division of Water Quality
Lexington-Fayette Urban County Government

125 Lisle Industrial Ave, Suite 180
Lexington, KY 40511
(859) 258-3426



Regency Apts

Erosion problem area
N 38:0098 W -84:5261

Erosion and debris from RR ditch blocks the stormsewer pipes at Derby Drive during storm events and overflow causes flooding at Derby and Regency Apts. Debris deposition at pipe junction is primary cause of flooding issues.

Derby Drive

Approx 2900' of RR ditch to rear yard

Pasadena Dr

North

Problem: Deposition blocks pipe junction and fills pipes, LFUCG Maintenance crews must remove blockage after every storm event of 1" or more.



8/2014



Discharge point to rear yard

Erosion at end of RR ditch just above the side discharge to the pipe junction in the rear yard of 272 Derby Dr.

September 2015 storm event deposits filled junction area.



Cleanup after Sept. event.



Deposits from holiday storm event December 2015.



Improvements to pipe junction in August 2014 to aid maintenance and prevent pipe clogging.



Debris (pile) removed from junction area after storm event August 10, 2014.

-Grid (drivable grass) was installed to allow equipment access with minimal damage to rear yard.