

Friends of Wolf Run Lex Grow Trees 2024

Shade Trees for Residential Properties:

Version 6.0 9/23/2024

Program Summary and Goals.

“Shade Trees for Residential Properties” project team consisting of:

- Friends of Wolf Run, Inc,
- Trees Lexington, Inc,
- Neighborhood association representatives
- Local nurseries
- Contracted Professional installers

Will carry out the targeted tree planting campaign, complete with neighborhood level outreach, training and education components, maintenance training and education and continued support for newly minted **“Neighborhood Tree Champions”** for each participating neighborhood.

The project will leverage

- Friends of Wolf Run grant administration and finance services,
- Trees Lexington expertise on species selection, planting suitability and volunteer training/education experience
- Street by street knowledge of participating neighborhood association leadership in getting this done.

Funds requested will be applied to

- Ordering up to 150 1.5” caliper trees from local nurseries (LFUCG Urban Forestry Program approved species). Number depends on market conditions and species selections based on actual cost.
- Contracting delivery and installation services by commercial landscapers in accordance with LFUCG Planting Manual specifications
- Trees Lexington’s training, technical support materials and educational activities and
- Volunteer materials and supplies to support the work of the Neighborhood Tree Champions.

In-Kind contributions (grant match) will include volunteer administrative, outreach and training services, administrative copays or donations from property owners and wholesale discounts from nurseries and installers.

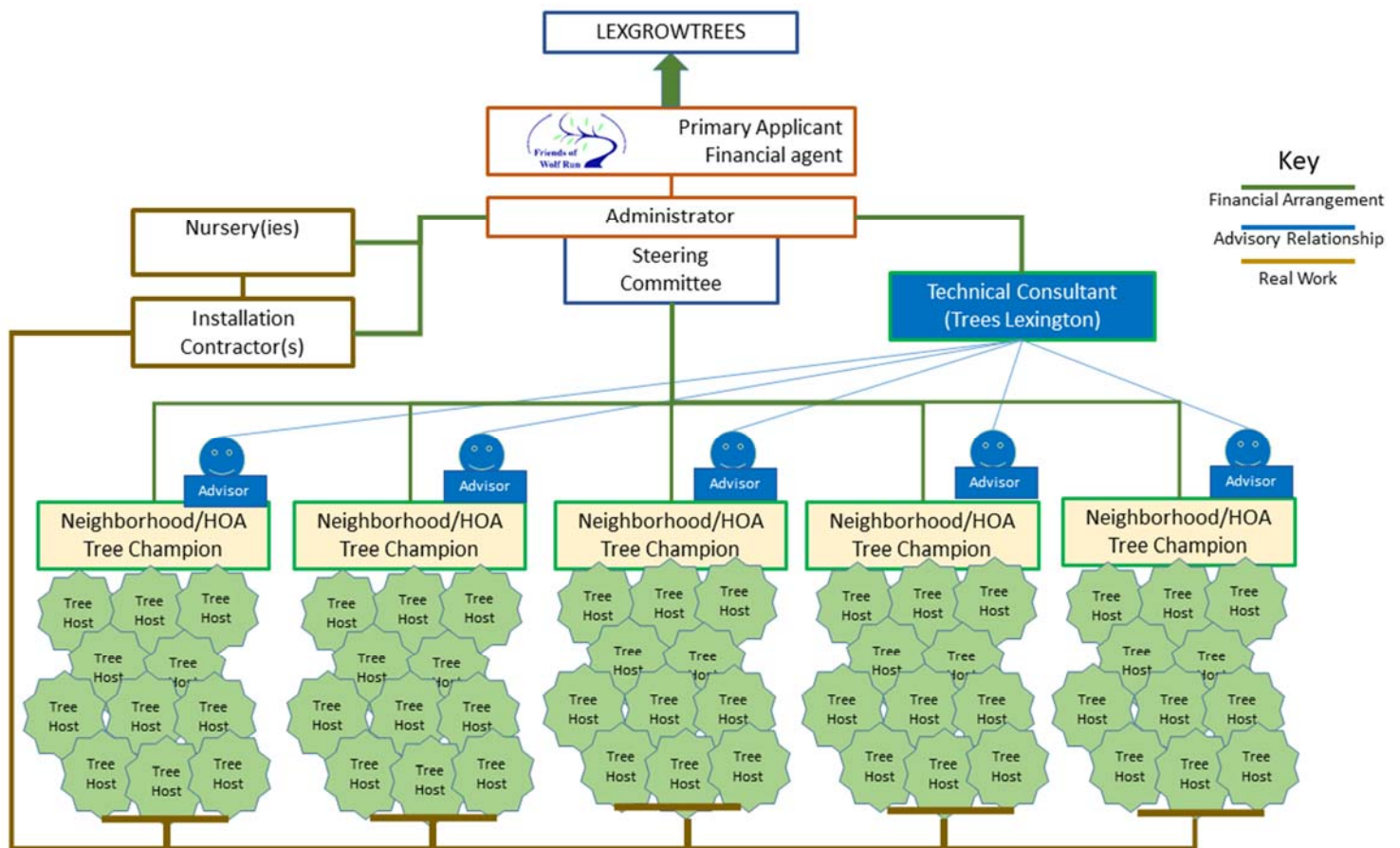
This program will focus on **high need areas** as identified in the 2022 Canopy Study in Council Districts 2, 3, 10 and 11 (Wolf Run Watershed). Even though this program focuses on the Wolf Run Watershed, our hope is the model for targeting and delivery can be applied city wide once our finance, management systems and training/education processes are tested and refined.

The project team is in a unique position to reach private lands not accessible to many government sponsored tree planting campaigns, and the larger tree format compliments distribution of smaller tree species by reaching property owners who are not likely to self-install larger trees.

Large Trees for Private Property Project Team:

Consensus based Volunteer Steering Committee composed of Project Leadership.

- **Administration and Finance:** Ken Cooke, Treasurer, Friends of Wolf Run
- **Education and Technical Support** Coordination, Michael Potapov, President, Trees Lexington
- **Cardinal Valley Neighborhood** Tree Champion: Peggy Henson
- **Hamilton Park/Westgate Neighborhood** Tree Champion, Bonnie Jacobs
- **Pine Meadow Neighborhood** Tree Champion, Aimee Eden
- **Gardenside Neighborhood** Tree Champion, Quincy Fuehne
- **Picadome Neighborhood** Tree Champion Lisa Chifalo
- **Southland Park Neighborhood** Tree Champion, Jean Watts
- **Additional neighborhood representatives** as they come forward
- **At Large Member,** Bruce Hutcheson, President, Friends of Wolf Run
- **Trees Lexington Neighborhood Advisors**
- **Contract Installers** (ex officio members of steering committee)
- **Others interested** willing to show up at planning meetings



Plan of Work and Timeline:

- **July 1:** (Immediately following grant award) Friends of Wolf Run will convene the Project Steering Committee
- **September 15:** (within 30 days of grant award) Core program documents, materials and accounting systems will be developed by the Project Steering Committee
- **September 16** (within 60 days of grant award) The project steering committee will organize up to two training workshops for Tree Champions, Volunteer Advisors and Neighborhood Leaders that will cover:
 - Project organization and logistics
 - Tree Champion technical training
 - Site selection
 - LFUCG Planting Manual based quality control
- **September 15 – October 30**, neighborhood tree walks and participant signups with homeowners
- **November 15 until hard freeze**, Tree ordering, delivery and installations (weather dependent)
- **November 15 – December 30**, Follow up inspections of installations by Tree Champions
- **February 1 – March 1, Spring planting campaign kickoff**
- **March `5 – May 1, neighborhood tree walks and second round of homeowner signups**
- Time selected by Trees Lexington: Follow up training workshop for neighborhood leadership and Tree Champions on planting, mulching and pruning with all participants.
- Repeat in Fall of 2025 if funds remain.
- Final Report, December 15, 2025.

Specific Organizational Roles:

What Friends of Wolf Run will handle:

1. Primary grant application and convener of the Project Steering Committee.
2. Finance and pay expenses purchases in advance of reimbursements.
3. Provide *administrative support* for the Neighborhood Tree Champions.
4. Order the trees from the nurseries.
5. Contract with the installers for installation and delivery.
6. Insurance coverage by a \$2,000,000 general liability policy through State Farm.
7. Communicate with the Tree Champion, and participating residents on installer scheduling.
8. Pay for the trees and pay the installers
9. Handle the reimbursement paperwork and grant reporting.

What Trees Lexington will handle:

1. Provide a representative for the Project Steering Committee
2. Provide technical support and training for Neighborhood Tree Champions (NTC's) to discuss trees as beneficial "utilities," evaluate planting sites, suggest appropriate tree species from an "approved" list, and evaluate tree installation quality relative to specifications through in-person and/or remote video training events.

3. Host educational tree walks in cooperation with participating neighborhoods engage residents about trees in general, discussing “right tree, right place” considerations. NTCs will be asked to encourage neighbors to attend the walks.
4. Provide support to NTCs for site specific considerations.
5. Provide planting specifications for the tree plantings.
6. Assist NTC’s in evaluating the tree plantings for compliance with specifications.
7. Provide tree maintenance instructions.
8. Offer up to four tree maintenance workshops covering the basics of watering, mulching, and young tree pruning. Printed and online reference resources will be provided for additional support and guidance.

What the Neighborhood Tree Champions (NTC’s) will do:

1. Help us **promote participation** via the neighborhood's social media, newsletter and email outlets.
2. Help us **identify willing participants** in their neighborhood, filling out our paper participant agreement forms.
3. **Communicate** with project coordinators when orders are received
4. **Work with Trees Lexington advisors** on site selection, species selection and maintenance guidance for the property owner.
5. Promote participation in a **neighborhood tree walk or field day**. Tree walks will be scheduled on request by the neighborhood to Trees Lexington.
6. **Check on installations** to be sure they were completed.

What the Contractor will do:

1. Pick up the tree(s) at the nursery
2. Contact Before You Dig, 811
3. Deliver the tree to the property to the spot marked by the property owner
4. Dig the hole, install the tree, mulch the tree and stake the tree per LFUCG Planting Manual Guidance.
5. The contractor will give us an alert when they will be delivering the trees. Schedule will vary based on their workload, weather and nursery details.
6. The contractor will send a printed (PDF) invoice to Friends of Wolf Run of Wolf Run Treasurer for payment

Logistics of Ordering and Installing Trees:

Tree and installation ordering will be done in manageable batches once the minimum for wholesale discounts is reached (6 – 10 trees per order)

- We can have more than 6 or 10 trees in a "batch" order.
- But that is the *minimum number* the landscaping contractors required for the wholesale discount.
- Less than that number we pay full retail for the tree, and full retail for the installation, and we don't want to do that.

"Rinse and repeat" till the money is fully expended.

- Inevitably, after the first round of planting, others will come forward and want to participate.
- We can sign up a new "batch" order for a neighborhood as interest and funds are available.

What trees will we be offering?

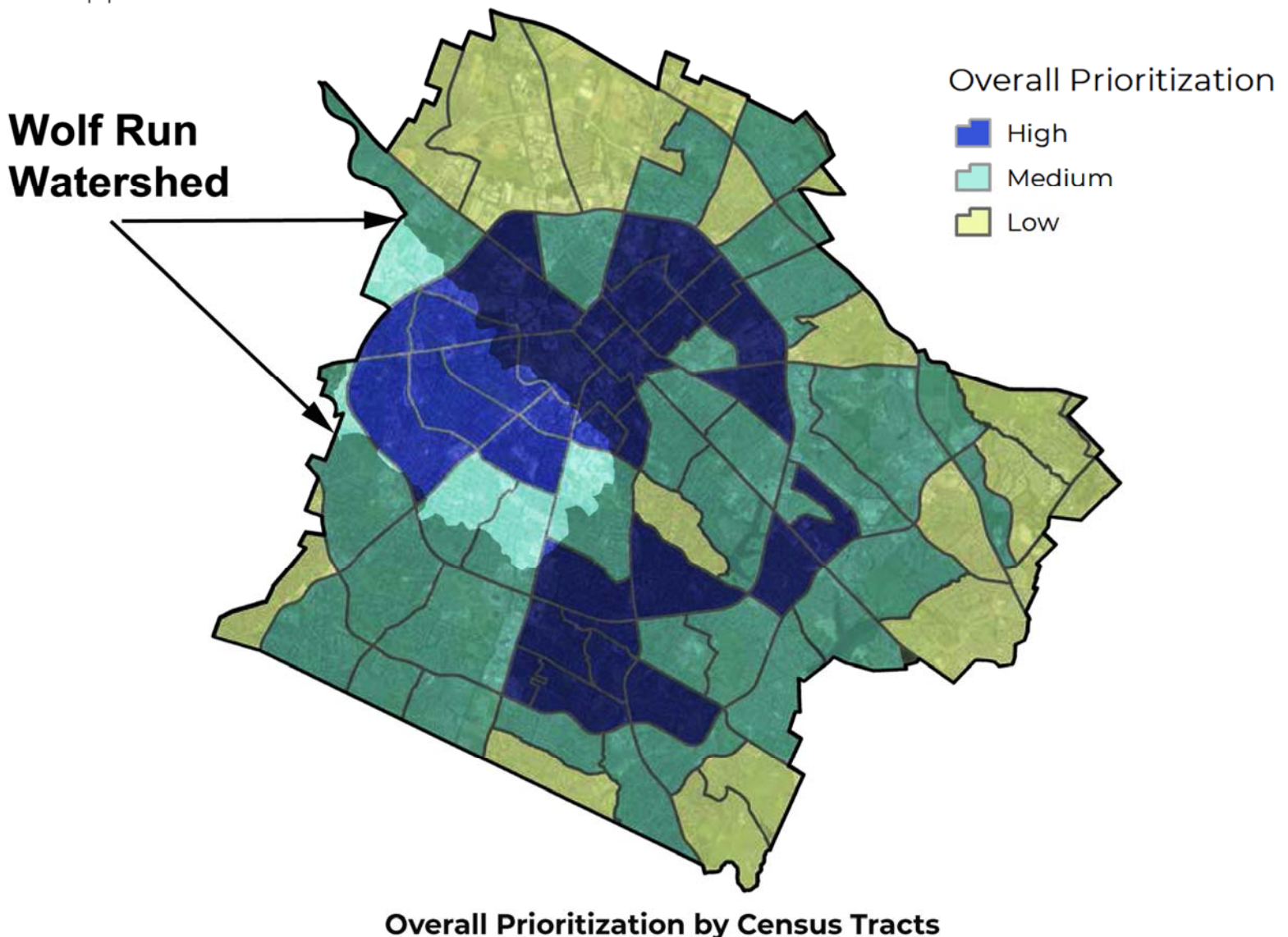
We are working on that list right now with Trees Lexington and the Urban Forestry Program in consultation with area nurseries.

- The species selection will depend on site, sunlight, soils and room for the tree to grow.
- The species list will have a selection of large and medium-sized native KY hardwoods.

If a private property owner wants a smaller format tree (shrub, understory tree) we will direct them to participate in other tree distribution programs through Trees Lexington or LexGrow Trees and support their efforts to get it, but we won't be paying for professional installations from grant funds for "small" trees.

Focus Area:

We will be working within various neighborhood associations within the Wolf Run watershed, primarily in the council districts adjacent to Versailles Road, bounded by Red Mile Road and New Circle Road. Most of the area contained precincts with High Priority in the 2022 Urban Tree Canopy Study as illustrated by this map



Project Budget: Funds Request:

Description	Participant	Quantity	Unit Cost	Grant	In-Kind	Project Total
Development of Neighborhood Tree Champions Workshop Presentation and Curriculum	Trees Lexington	1	\$ 1,200.00	\$ 950.00	\$ 250.00	\$ 1,200.00
NTC Training Workshops	Trees Lexington	2	\$ 250.00	\$ 500.00		\$ 500.00
Tree Walk Promotional materials, handouts and supplies	Trees Lexington	8	\$ 100.00	\$ 800.00		\$ 800.00
Trees Lexington Primary Contact Time (Hours)	Trees Lexington	10	\$ 30.00		\$ 300.00	\$ 300.00
Trees Lexington Consultations with NTCs	Trees Lexington	32	\$ 30.00	\$ 960.00		\$ 960.00
NTC Consulting Time	Trees Lexington	35	\$ 25.00		\$ 875.00	\$ 875.00
Tree Costs from area nurseries	Area Nurseries	Variable	\$ 210.00	\$ 31,500.00		\$ 31,500.00
Installation Contract labor Cost with licensed landscaping companies	Area Contractors	Variable	\$ 250.00	\$ 61,250.00		\$ 61,250.00
Landowner Participation/planning time	Tree Recipients	150	\$ 15.00		\$ 2,700.00	\$ 2,700.00
NTC Materials and Supplies (forms, stakes, logo-identified materials)	FOWR	8	\$ 50.00	\$ 400.00		\$ 400.00
Steering Committee Meeting Costs (Facilities rental, setup, printed materials)	FOWR	4	\$ 100.00	\$ 400.00		\$ 400.00
Liability Insurance (State Farm, \$2,000,000.00)	FOWR	2	\$ 375.00		\$ 750.00	\$ 750.00
Project Administration	FOWR	100	\$ 18.00		\$ 1,800.00	\$ 1,800.00
Follow up inspection field visits by Trees Lexington (random selection)	Trees lexington	15	\$25	\$ 375.00		\$ 375.00
Tree Maintenance Workshops by TL	Trees Lexington	4	\$100	\$ 400.00		\$ 400.00
				\$ 97,535.00	\$ 6,675.00	\$ 104,210.00

Measurable Outcomes:

1. Number of trees planted:

Our estimate is we can place up to 150 1.5" caliper trees given funding levels requested. Market conditions could affect that number but those costs will be known and actual planting rates reported to both LexGrowTrees coordinators and project management. Since we will know the parcel addresses of each tree installed, we can collect data on survival rates at 1 and 5 year intervals.

2. Tree Canopy Prediction/10 Years:

Based on generalized 10 year canopy growth for the size trees considered, trees planted should yield between 17,500 and 22,750 square feet of additional canopy in the target area after 10 years of growth mark. Tree Canopy Calculators can provide additional information on stormwater quality improvements and heat island reduction contributions.

3. Neighborhood Tree Champions Recruited and Trained:

This will be one of our most valuable outcomes, identifying, recruiting, training and supporting neighborhood level agents, working with tree experts to place and support tree health maintenance and expansion at the block by block level in residential areas. We will be starting with 8 Tree Champions, but our preliminary research indicates that multiple individuals in each neighborhood are willing to fill this important opinion leadership and advocacy role.

4. Individual Homeowners Reached:

This is a larger number of potential participants and recipients: We can touch up to 175 property owners with this program, and provide motivated interest and support through 4 planned tree maintenance workshops

5. Tree Walk Participation:

We will have sign in sheets and information regarding participation in scheduled tree walks. Contact information will be shared with LFUCG Urban Forestry Program and Trees Lexington adding to their outreach and coordination efforts.

6. Social Media, Public Outreach and Educational participation values

We will be utilizing traditional media and social media for our outreach and promotional efforts. Statistics on participation and impact will be maintained.

Right: Example Growth Rate Curve for one species showing accelerated growth rates for various starting sizes.

